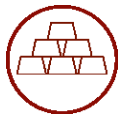


## FACT SHEET



Production  
201,000 oz



1<sup>st</sup> Gold  
26<sup>th</sup> Jan 2018



Resources 399koz  
Reserves 244koz



Strong local support,  
49% Employees from  
local Communities

## FY2020

### PERFORMANCE

- Gold Production 86,001 oz
- Gold Sold 93,120 oz
- Ore milled 1.58Mt @ 1.78g/t
- All In-Site Costs (AISC)  
US\$753 per oz
- 100% of the initial US\$106M  
capital repaid after 26  
months of operation
- Exploration focused on ex-  
tending mine life
- Reviewing third party oppor-  
tunities to provide ore for  
the mill

## Sissingué Gold Mine, Côte d'Ivoire, West Africa

### Highlights:

Perseus Mining is a multi-mine West African gold producer, developer and explorer, with two operating gold mines in Ghana and Côte d'Ivoire, and a third project in development, also in Côte d'Ivoire.

Sissingué Gold Mine (SGM) was the second gold mine developed by Perseus as part of Perseus' plan to become a multi-mine, multi-jurisdiction West African gold producer.

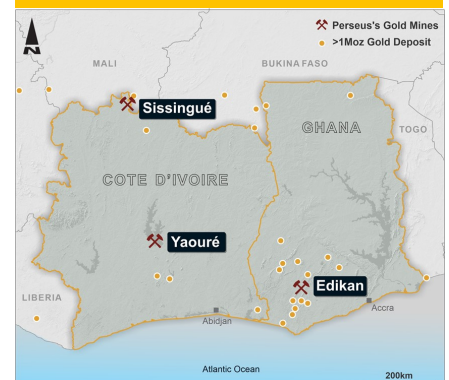
First gold was poured on 26<sup>th</sup> January 2018, after a successful ahead of time and on budget development. Commercial production was achieved on 1<sup>st</sup> April 2018.

SGM is located 787 km north of Abidjan on the border with Mali, 230km north-west of the regional capital Korhogo and 24km from the local commercial town of Tengrela. The SGM Exploitation Permit, PE39, covers an area of 446km<sup>2</sup>.

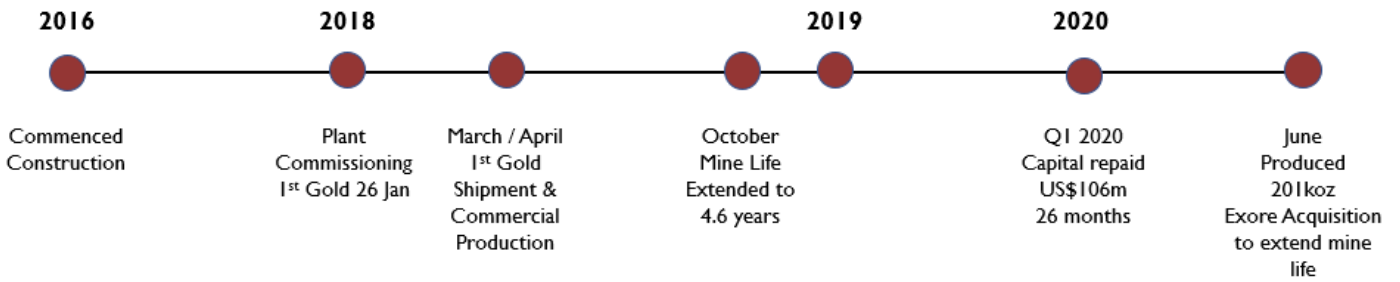
Perseus owns a 86% interest in Perseus Mining Côte d'Ivoire SA (PMCI), owner of SGM, with the other shareholders being 4% Société Minière de Côte d'Ivoire SARL (SOMICI) and 10% free carried interest by the government of Côte d'Ivoire.

Proved and Probable Ore Reserves total 3.6 million tonnes of ore, grading 2.12 g/t gold containing 244 thousand ounces of gold inclusive of over 399 thousand gold ounces of Measured and Indicated Resources, as at 30 June 2020.

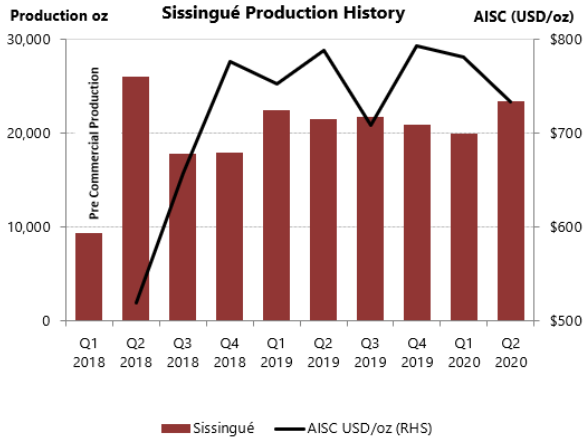
SGM life of mine gold production totals ~200,000oz producing at approximately 70,000ozpa over the three-year mine life. Exploration is on-going to add to the current Reserve base.



# SISSINGUÉ TIMELINE

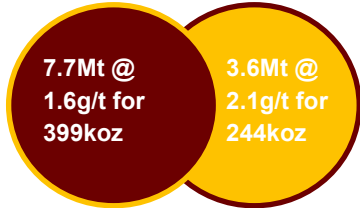


# SNAPSHOT



**Mineral Resources**  
(30 June 2020)<sup>1</sup>

**Ore Reserves**  
(30 June 2020)<sup>1</sup>



<sup>1</sup> See our website for further details of Perseus's mineral resources & ore reserves

Sissingué has produced 201,284oz since producing 1<sup>st</sup> gold in January 2018.



## OUR VALUES



### TEAMWORK

alone we achieve a little, working together we achieve a lot!



### INTEGRITY

we act with consistency, honesty and accuracy in everything we do



### COMMITMENT

we give our all, every time we do something



### ACHIEVEMENT

we do what we say, we deliver on our promises... always



Sissingué Village Youth Centre Official Inauguration Ceremony by his Excellency Jean-Claude Kouassi - Minister of Mines



## GEOLOGY AND RESOURCES

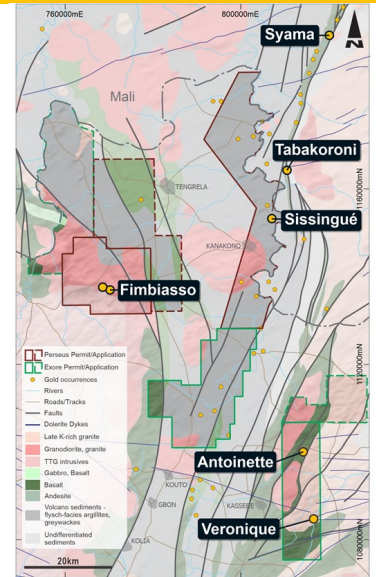
The SGM is situated on the Syama-Boundiali Greenstone Belt. The terrain is comprised of undifferentiated granitoids, flysch sediments, intermediate volcanics, and small occurrences of mafic intrusives and molasse sediments.

Gold mineralisation is associated with an altered granitic intrusive, porphyritic dykes and their alteration halo in Lower Proterozoic Birimian metasediments.

Resources as at 30 June 2020 included;

- Measured and Indicated Resources totalled 7.7Mt @ 1.62g/t for 399koz
- Inferred Resources totalled 0.2Mt @ 1.4g/t for 11koz

Exploration is on-going at various prospects within the 446km<sup>2</sup> tenement package. Drilling is focused on following up geochemical anomalies at Tiana and Fimbiasso. Third party opportunities are being reviewed.



## MINING

An updated LOMP released in October 2018 produces 357,000 ounces over the remaining 4.6 year mine life at Sissingué at an AISC of US\$756/oz.

Ore is sourced from the main Sissingué pit and 7 small pitlets including Fimbiasso.

Average material movement of 4.9Mtpa with a strip ratio of 3.1:1 and ore processing at an average rate of 1.2Mtpa.

SGM is a conventional open pit mine that use two contractors for its operations: a mining contractor to undertake grade control, drill, load and haul and dewatering, and a blasting contractor to undertake explosives supply, magazine and blasting activities. The mining contractor is Société de Forage et de Travaux Publics (SFTP) who are a Malian owned mining services business. The blasting company is Maxam, a Spanish company that offer blasting solutions on a global scale.

## RESERVES

Reserves as at 30 June 2020:

Proved and Probable Ore Reserves totalled 3.6Mt @ 2.12g/t for 244koz



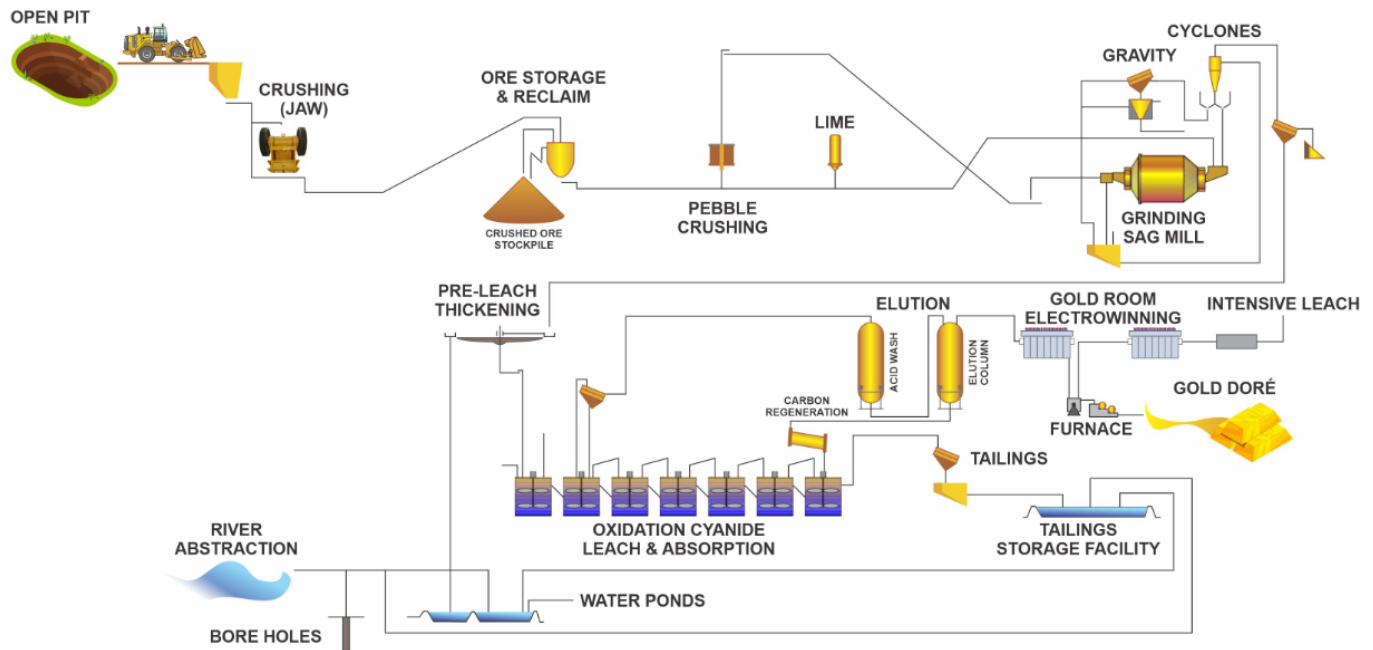
**Sissingué Open Pit**

## PROCESSING

The processing facility at SGM was constructed by Lycopodium and Perseus ahead of schedule and on budget US\$106m with first gold poured on the 26<sup>th</sup> January 2018.

The circuit consists of single stage crushing, SAG milling, gravity and CIL recovery. The plant processed between 1.0 and 1.4 Mtpa depending on the ore hardness. As at 31 March 2018 93,709 ounces of gold have been produced at Sissingué.

Flowsheet includes crushing, grinding to 75µm, gravity, CIL. SAG Mill capacity 1.8Mtpa (oxide ore) or 1.0Mtpa (fresh ore). Total gold recovery 95% (oxide ore) and 90% (fresh ore).



Process Flowsheet



## GENERAL

### Infrastructure:

- 130 room camp and catering facilities
- Site diesel power station with capacity of 11.2MW and demand 6.4MW
- Water sourced from boreholes and the Bagoue River during high flow periods

### Workforce:

- Total workforce of ~670 including contractors.
- Ivorian employment rate is 93% with 47% employed from the local community.
- Female employment rate is 13% of the total staff

### Health & Safety:

- As at 30 June 2020 the 12 month rolling average Lost Time Injury Frequency Rate (LTIFR) was 0.0
- Strong focus on OHS training and malaria management.





## COMMUNITY

The Sissingué operation has developed a very high level of engagement with the local community through various committees and community based activities and as a result enjoys strong local support for the Project.

The 12 affected communities include the villages of Sissingué, Kanakono, Tengrela, Tialaka, M'Basso, Zanikaha, Gbeni, Tiongoli, Ziekoundougou, Basso, Papara and Doubasso. The Sissingué village is the closest to the Project.

0.5% of revenue from SGM is paid to the Community Development Fund (CDF) which is managed by the Comité de Développement Local Minier (CDLM) which consists of government and community representatives.

The Project supports a high level of local employment, supports local enterprise and has a skills based training program designed around transferable skills and qualifications. 59% of supplies for the catering contract are sourced locally.

Community projects include;

- Upgrading the Tengrela access road;
- Water infrastructure at Sissingué and Tiongoli;
- Several social development programs implemented including farming equipment supply to the women's farming association and supply of fertilizers to displaced farmers from SGM site;



## ENVIRONMENT

Perseus Mining regards environmental care as an integral part of its business and is committed to excellence in the management of environmental matters.

We aim to minimise environmental impacts at every stage of work from planning, through to exploration, development, mining, processing and decommissioning. Perseus, through our personnel, will:

- Maintain a comprehensive environmental management system;
- Undertake consultation to ensure that community interests are considered;
- Comply with applicable laws, regulations and standards;
- Provide safeguards and contingency plans to mitigate potential impacts;
- Monitor all activities and strive to continually improve performance; and
- Promote environmental awareness amongst the workforce to increase understanding of environmental responsibilities.

